



DEPARTMENT OF ENGINEERING AND PLANNING
Division of Engineering
One Spring Street
Newton, New Jersey 07860
973-579-0430
dpw@sussex.nj.us
Matthew Sinke, P.E.
Division Director/Assistant County Engineer

Traffic Advisory: Bridge G-07 Guiderail Upgrades

Distributed: April 12, 2024

Project:

**Bridge G-07 Guiderail Upgrades
CR-519 (Wintermute Road), Green Township**

County Route 519 (Wintermute Road) carrying Bridge G-07 will be receiving guiderail upgrades later this year. In order to complete these future upgrades, structural repairs to the concrete headwalls must first be done to better facilitate guiderail connections on the structure. These upgrades will enhance the overall safety features of the bridge.

Construction Schedule:

Construction is anticipated to begin on or about **Thursday, April 18th**, and is estimated to last four to six weeks, barring any adverse weather conditions, schedule impacts, or unforeseen circumstances.

Traffic Impacts:

Bridge G-07 will remain open to traffic during construction.

Temporary traffic signals will be implemented to allow for a single-lane, two-way, alternating traffic pattern through the work zone.

Contact Information:

For more information regarding this project, please contact Chris Lautz, E.I.T. at the Sussex County Division of Engineering at 973-579-0430 x 1308 or clautz@sussex.nj.us



Typical Single-Lane, Two-Way Traffic with Signals



Bridge G-07 Concrete Spalling at Guiderail Connections, Typical



Typical Headwall & Weldment Upgrade

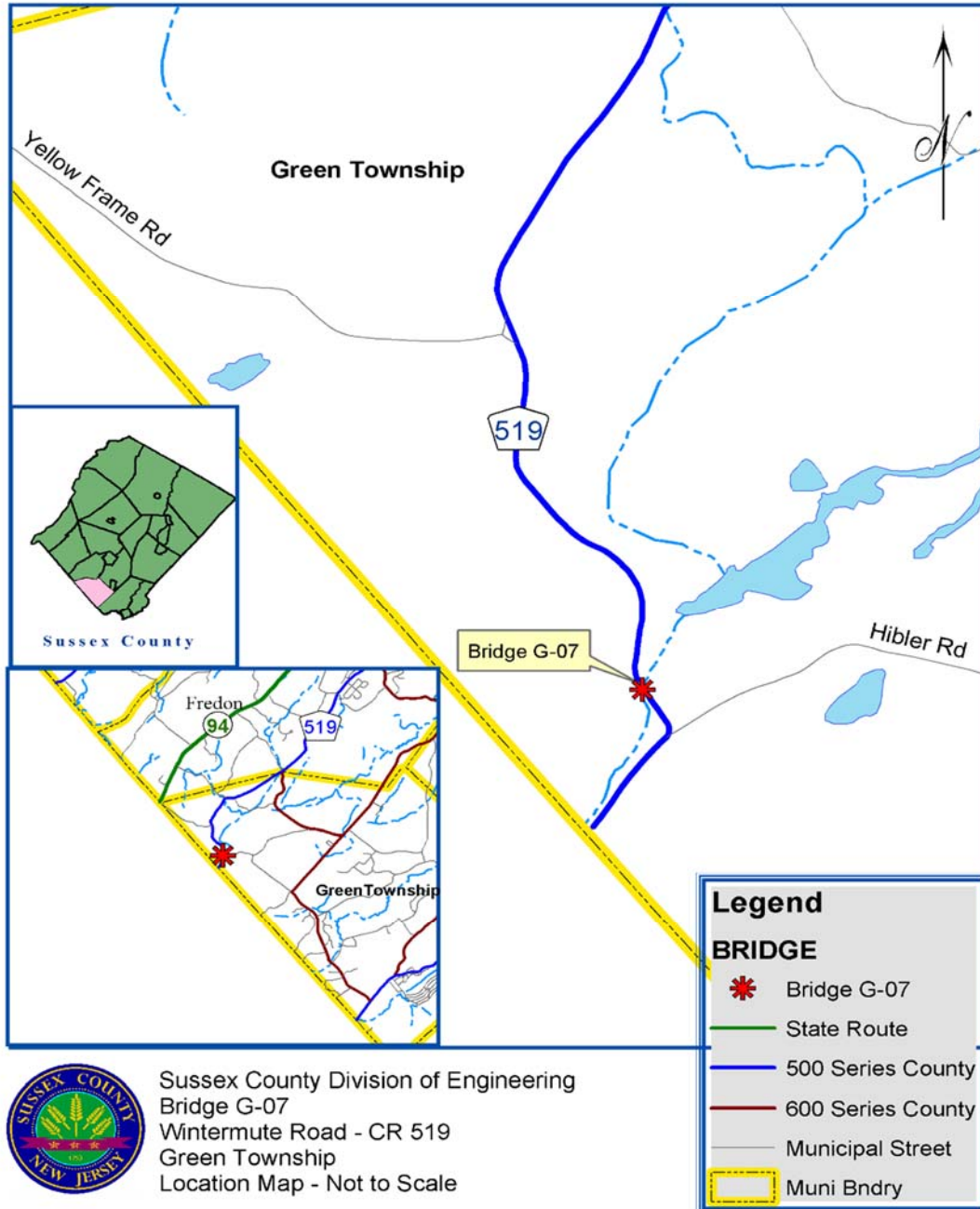


DEPARTMENT OF ENGINEERING AND PLANNING
 Division of Engineering
 One Spring Street
 Newton, New Jersey 07860
 973-579-0430
 dpw@sussex.nj.us
 Matthew Sinke, P.E.
 Division Director/Assistant County Engineer

Traffic Advisory: Bridge G-07 Guiderail Upgrades

Distributed: April 12, 2024

Bridge G-07: Project Location Map



Sussex County Division of Engineering
 Bridge G-07
 Wintermute Road - CR 519
 Green Township
 Location Map - Not to Scale